

Metals for Medical

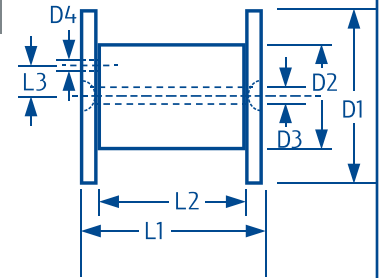
SPOOL CHARTS



We Deliver Precision®

Bulk Spools

NUMBER	D1 Flange		D2 Barrel		D3 Arbor Hole		D4 Drive Pin		L1 O/A Length		L2 Traverse		L3		*Capacity lbs
	inch	mm	inch	mm	inch	mm	inch	mm	inch	mm	inch	mm	inch	mm	
DIN 80	3.15	80	2	50	.63	16	.28	7	2.5	64	2.5	64	.79	20	1.9
DIN 100	4	100	2.5	63	.63	16	.28	7	4	100	3.15	80	.79	20	1.9
DIN 125	5	125	3.15	80	.63	16	.28	7	5	125	4	100	.79	20	1.9
DIN 160	6.3	160	4	100	.87	22	.5	13	6.3	160	5	128	1.26	32	**14.0
D-1	2.5	63.5	1.5	38	.63	16	.35	9	3.25	83	3	76	.55	14	1.0
D-10	6	152	3.5	89	.63	16	.4	10	4.3	109	3.5	89	.75	19	10.0

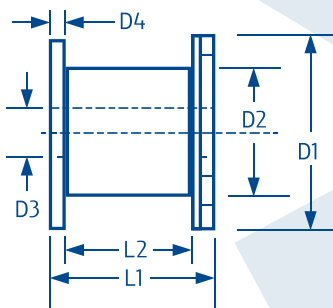


Meets ICE 264-2-1 (DIN 46 399)

* Capacity for 304V SS

** Available with 16 mm bore adapters

Steger, NEB and Wardwell Bobbins



NUMBER	D1 Flange		D2 Barrel		D3 Arbor Hole		D4 Flange Width		L1 O/A Length		L2 Traverse		*Capacity	
	inch	mm	inch	mm	inch	mm	inch	mm	inch	mm	inch	mm	grams	lbs
15 MM	1.6	40	.59	15	.42	10.6	.14	3.6	1.4	35.5	1	26	120	0.26
26 MM	1.7	43	1	26	.42	10.6	.14	3.6	1.4	35.5	1	26	90	0.20
30 MM	1.6	40	1.2	30	.42	10.6	.14	3.6	1.4	35.5	1	26	50	0.11
NEB	1.3	34	.75	19	.33	8	.28	7	4	100	3.3	84	225	0.5
WARDWELL	2.6	66	1.4	35	.66	17	NA	NA	3.25	83	2.8	72	450	1.0

Multiple colors available

* Capacity for 304V SS



ULBRICH STAINLESS STEELS
& SPECIAL METALS, INC.

(800) 243-1676

INFO@ULBRICH.COM

ULBRICH.COM